



MINUTES

MEETING OF THE:	Waihi Community Forum
MEETING DATE:	Thursday 12th December 2024
VENUE:	Down Thyme
TIME START:	11am
TIME FINISH:	12.30pm
MEMBERS:	Belinda Burke, Bhavesh Ranchhod, Mike Hayden, Rangī Honey, Ernani de Ocampo, Anne Marie Spicer, Donna Fisher, Paula Trubshaw, Paul Anderson
INVITED:	Paula Blackman - WCF Coordinator
FILE REF:	WCFMOM2024-12-12

1. **APOLOGIES RECEIVED**

Paul Anderson, Rangī Honey

2. **CONFIRMATION OF MINUTES**

Confirmation of minutes from the meeting of 14-11-2024, ref #WCFMOM2024-11-14
EdO and DF confirmed the minutes as read are accepted true and correct.

3. **CORRESPONDENCE**

- Letter received from Mayor Toby Adams in support of the Outdoor Recreation Hub at Morgan Park.
- Email received from Dawn Sinclair re: Outdoor Recreation hub site.

ACTION: PB to draft response to Dawn for BB to sign

4. **MEDIA & WEBSITE**

4.1 WCF and Media

ACTION: PT to send PB a link to the Herald article so PB can add link to the website

4.2. Website and Facebook post ideas.

ACTION: Do a Christmas post

5. **GENERAL BUSINESS**

5.1. For the future.

MH suggested to consider “Friends of the Forum” and look at smaller projects to diversify from the hub.

5.2. OceanaGold Update

Martha Mineral Zone Public Hearing

A hearing to consider and make recommendations on what is being proposed by OceanaGold via Proposed Plan Change 6, and requests made in submissions or further submissions, took place from the 10th to the 12th of December at the Presbyterian Community Hall, 76 Moresby Avenue, Waihi.

The hearing was held before an independent Hearing Committee made up of four commissioners, and submitters on Proposed Plan Change 6 were able to present evidence to support the points made in their submission/s. Members of the public were free to attend to hear the submissions of various parties.

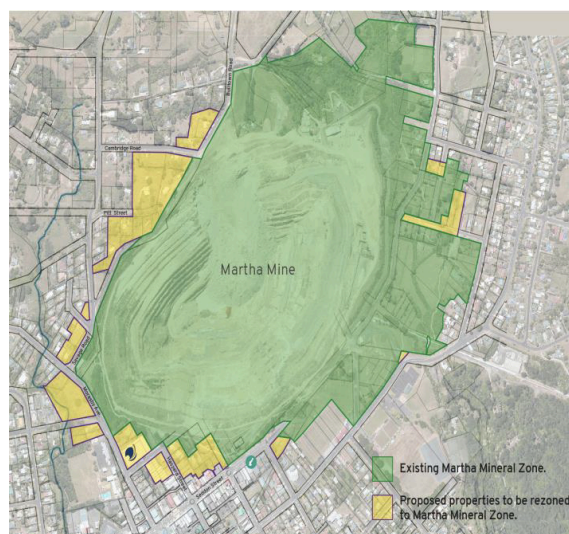
The proposed expansion of the Martha Pit, as part of the Martha Open Pit Project, would first require a change to the District Plan to increase the boundary to include all the land parcels necessary to support the expansion (this is inclusive of areas required for rehabilitation).

No privately owned land will be rezoned as part of the plan change application. A change to the Martha Mineral Zone doesn't mean we can mine. Any mining activity is controlled by the Resource Management Act and resource consents would still need to be sought should the plan change be approved.

This from Council:

Council staff anticipate that the Hearing Committee will be able to recommend a decision to the Council early in the New Year, with the decision being released soon after. Appeals on Council decisions are able to be made to the Environment Court, and further information about the appeal period and process will be included in the decision letters."

<https://www.hauraki-dc.govt.nz/council/plans-strategies/hauraki-district-plan/dp-changes-6>



Waihi North Project Information Day

The Waihi North Project Information Day was held on Saturday 30 November and went well, with 28 people attending. We had a mix of visitors, from those who happened to walk by and decided to pop in for a look, to residents living near the proposed project who had specific questions they wanted answered. Also of note is the ongoing community interest in any potential expansion of the Martha Open Pit, with several attendees looking for updates on this project.

Sponsorship & Donations Approved in November

St Joseph's School - \$14,000

Waihi East School - \$14,000

Waikino School - \$14,000

Waihi Central School - \$44,500

Waihi College - \$58,000

Paeroa Community Support Trust - In kind donation, loan of mini dig for Event in 2025

Whangamata Tramping Club - \$1,083 – Purchase of 2 x Personal Locator Beacons

Waihi Beach Playcentre - \$2,379 – Replacement Shade Sail
 Waihi Cherry Blossom Festival Society - \$2,247 – Cherry trees and stakes, daffodil bulbs
TOTAL \$150,209

Complaints and Concerns for November

Topic	Number of Complaints	Number of Complainants
Vibration	2	2
Helicopter Activity	9	2
Dust	1	1
TOTAL	12	5

Topic	Number of Concerns	Number of stakeholders who raised Concerns
Communication	1	1

Christmas at the Lake

OceanaGold took part in the Christmas at the Lake on Saturday 1 December. Staff crewed our mini digger for the day and as usual, were kept very busy with lots of children enjoying a free turn at the controls.



Holiday Period Closures and Availability

Both our Moresby Admin Office at 43 Moresby Ave and the Project Information Office at 86 Seddon Street will be closed from Saturday the 21st of December, opening again from Monday the 6th of January. The January edition of Mining Matters is scheduled for the week beginning the 13th of January.

There will be no blasting of any type on Sundays or public holidays.

Our Community Engagement line will still be active throughout the holidays for any queries or concerns, so please feel free to get in touch on 0800 924 44.

A special stand out for us in another active year for the Waihi Community Forum, was gaining council consent and all the funding required to start construction of the new pump track at Morgan Park in the New Year. This would not have been possible without the outstanding work done by Forum Coordinator Paula Blackman, what a legend, thank you Paula.

Thanks to everyone for your awesome mahi this year, as always, we've enjoyed working with such a dedicated and hardworking team. We wish you and your families a happy and safe Christmas.

Meri Kirihimete

6. STREETS AHEAD

6.1 Bank balance \$421,784.00 CR

- Tagged Funding (Hub) - \$406,105 (of which \$200,000 Lotteries, \$36,105 WCF, \$10k VO Trust, \$150k OG, \$10k Lions Club, \$2,592.36 Waihi Herb Society)
- Charities Services annual report has been uploaded to the Charities Register website.
- BR has applied to Westpac to cease deduction of resident withholding tax as per charity status, and refund. Waiting for bank to process refund.

6.2. Outdoor Recreation Hub

- Concrete path from carpark to pump track - Awaiting a second supplier quote from HDC PM before applying for funding.
- Update received from Paula T re: TCC advice about the Mount Maunganui Skate Park that may help the Forum.
- Adult exercise equipment/Outdoor balance equipment - reconsider name to reflect that all ages can have fun with it.

ACTION: PB to check Rich Landscape Contract re use of design

Dates for future meetings

Next Meeting: Thursday 13 February 2025
Future Meeting: Thursday 13 March 2025

In response quote reference: 3770434

3 December 2024



• FROM THE MAYOR'S OFFICE •

To whom it may concern

External funding of Waihi Outdoor Recreation Hub

As Mayor of the Hauraki District Council, it is my pleasure to express my wholehearted support for the proposed redevelopment of Morgan Park in Waihi. This project represents a bold and exciting opportunity to enrich our community's recreational landscape, with benefits that will extend across the entire Hauraki District.

At the heart of this redevelopment is the creation of a fully accessible pump track—the first of its kind in our District. This innovative facility will complement the upgraded playground and skate park, offering a versatile and inclusive space that caters to people of all ages and abilities. By incorporating multiple ride options and progression pathways, the pump track will encourage ongoing participation in active recreation, promoting physical and mental wellbeing for generations to come.

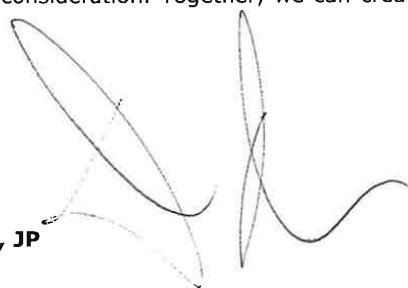
Morgan Park's transformation is set to make it a true destination for locals and visitors alike. Beyond the obvious recreational benefits, this project has the potential to foster community connection, attract tourism, and contribute to the economic vitality of Waihi and the wider region.

I believe this initiative aligns strongly with our Council's goals of creating thriving, connected communities and ensuring equitable access to high-quality recreational opportunities. We are committed to supporting this project and ensuring its long-term success.

I urge you to consider funding this remarkable development, which will not only serve our current residents but leave a lasting legacy for the Hauraki District. Should you require further details or wish to discuss this project in more depth, I would be delighted to provide additional information or support.

Thank you for your consideration. Together, we can create something truly special for our community.

Yours sincerely



D A (Toby) Adams, JP
Mayor

Email received from Dawn Sinclair

Dec 8, 2024, 2:49 PM (21 hours ago)

to me, waihi.info, Sarah.A.Holmes, Josh.Martyn, Bhavesh.Ranchhod, Austin.Rattray, Anne, info.

Greetings All, Long time no contact!

Saw in the HC Post this week that plans have been made for an outdoor recreation hub at the Kenny St end of Morgan Park. Some info you might find interesting.

Back in 1905 one of our esteemed surveyors identified a fault line running from Pukewa Hill through to this area. I just happen to have a geologist son-in-law who came across this somewhere. Waihi's original community pool was in this area but had to be relocated to the College because the pool kept developing leaks and couldn't hold the necessary water.

Sometime long ago (when I was at school), Mr Olphert was standing outside his hardware shop at the top of the main street when there was a humph sound, a dust storm and a hole developed further up and to the left of Seddon Street. Then of course we had the house falling into a hole which developed at the Pukewa end of Barry Road and haven't we had another incident since then?

I understood that the reason for moving the tennis, basketball courts and parking area to the other end of the park was that holes kept developing in the seal. Waihi Bowling Club and Croquet Club have also had similar problems. So.....could it be wise to commission a professional and competent Geotech person to fully investigate this area prior to pouring any concrete? Oceanagold should have access to this type of expertise.

Also been meaning to tell you that Waihi's main street is looking particularly good – nice variety of shops and eating facilities.

Fond regards

Dawn Sinclair